

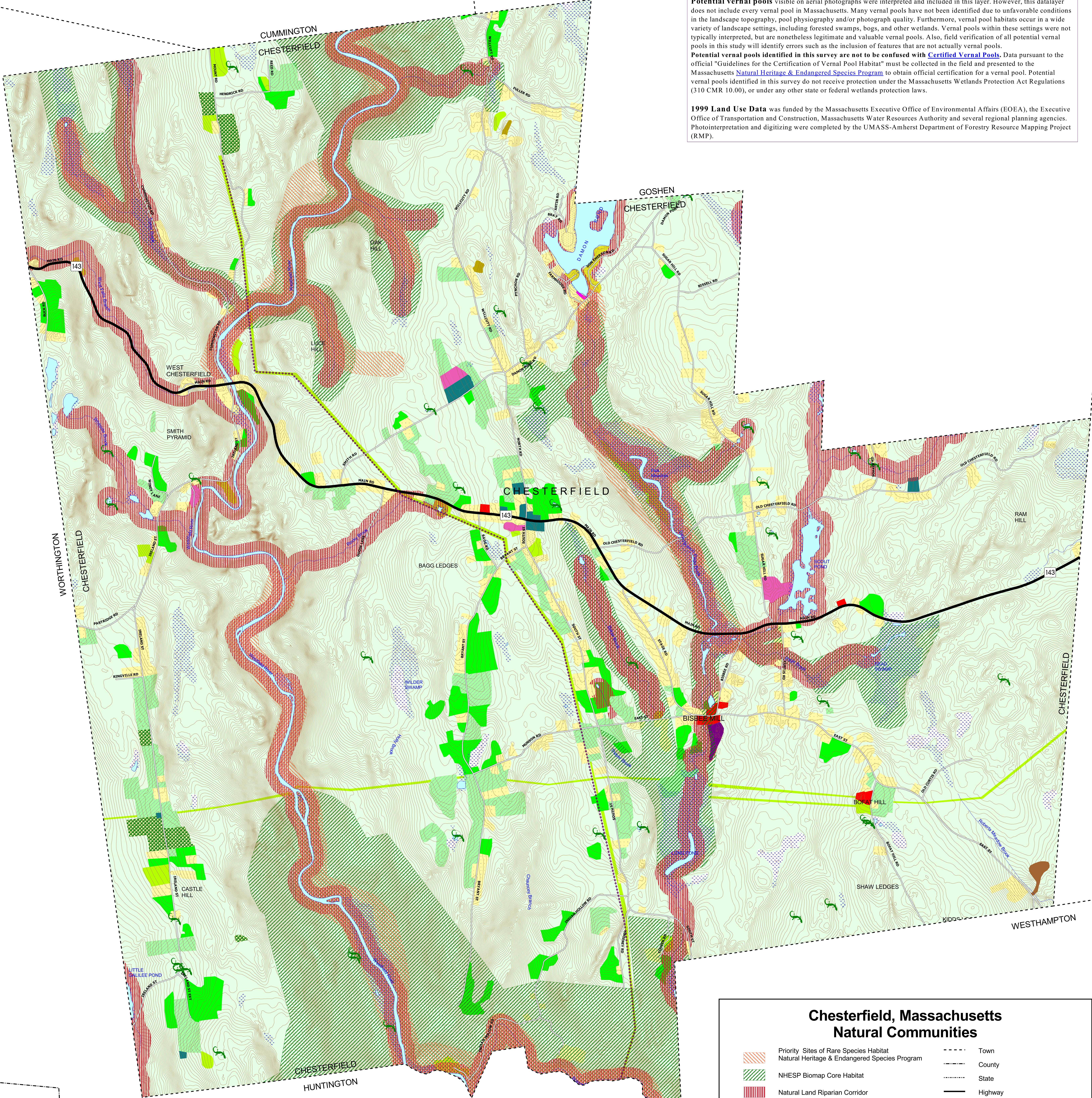
Natural Land Riparian Corridors are defined as "natural lands" within a 100 meter corridor encompassing perennial stream and river features (as coded in the MassGIS 1:25k Hydrography layer). This datalayer depicts areas within the riparian corridor that remain in a "natural state", potentially functioning as a corridor for select species movement, as well as additional ecological purposes. It is important to note the "natural land" definition and the distance defining the riparian corridor were tailored to meet the objectives of the [Massachusetts Resource Identification Project \(MRIP\)](#).

NHESP Biomap Core Habitat is one of two datalayers resulting from the BioMap biodiversity mapping project. The Core Habitat layer depicts the most viable habitat for rare species and natural communities in Massachusetts. Using a variety of data sources, primarily field data, ancillary literature, and color-infrared aerial photographs, [Natural Heritage and Endangered Species Program \(NHESP\)](#) scientists.

Potential vernal pools visible on aerial photographs were interpreted and included in this layer. However, this datalayer does not include every vernal pool in Massachusetts. Many vernal pools have not been identified due to unfavorable conditions in the landscape topography, pool physiography and/or photograph quality. Furthermore, vernal pool habitats occur in a wide variety of landscape settings, including forested swamps, bogs, and other wetlands. Vernal pools within these settings were not typically interpreted, but are nonetheless legitimate and valuable vernal pools. Also, field verification of all potential vernal pools in this study will identify errors such as the inclusion of features that are not actually vernal pools.

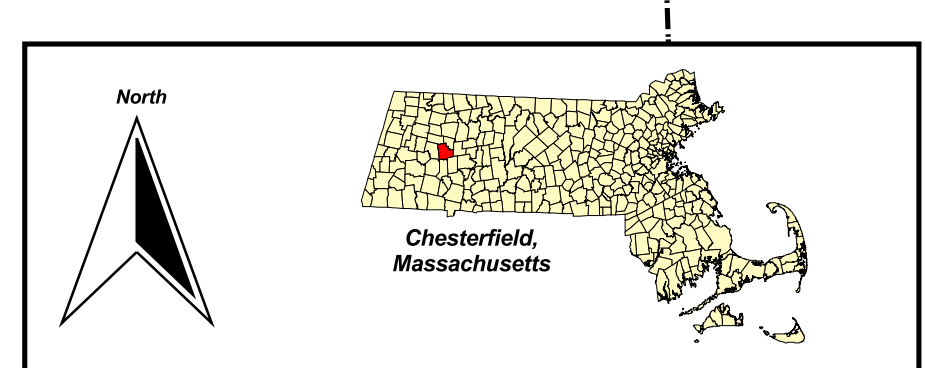
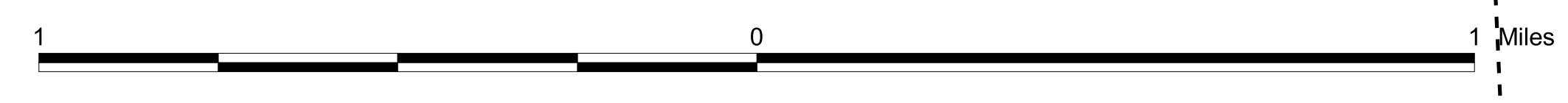
Potential vernal pools identified in this survey are not to be confused with Certified Vernal Pools. Data pursuant to the official "Guidelines for the Certification of Vernal Pool Habitat" must be collected in the field and presented to the Massachusetts [Natural Heritage & Endangered Species Program](#) to obtain official certification for a vernal pool. Potential vernal pools identified in this survey do not receive protection under the Massachusetts Wetlands Protection Act Regulations (310 CMR 10.00), or under any other state or federal wetlands protection laws.

1999 Land Use Data was funded by the Massachusetts Executive Office of Environmental Affairs (EOEA), the Executive Office of Transportation and Construction, Massachusetts Water Resources Authority and several regional planning agencies. Photointerpretation and digitizing were completed by the UMASS-Amherst Department of Forestry Resource Mapping Project (RMP).



Chesterfield, Massachusetts Natural Communities

	Priority Sites of Rare Species Habitat Natural Heritage & Endangered Species Program		Town
	NHESP Biomap Core Habitat		County
	Natural Land Riparian Corridor		State
	Crop Land		Highway
	Pasture		Secondary Road
	Forest		3 Meter Contour
	Wetland		Streams
	Power Line ROW		Ponds
			Potential Vernal Pools Natural Heritage & Endangered Species Program



GOSHEN

CHESTERFIELD

WESTHAMPTON

HUNTINGTON

CUMMINGTON
CHESTERFIELD

GOSHEN
CHESTERFIELD

CHESTERFIELD

WORTHINGTON
CHESTERFIELD

CHESTERFIELD